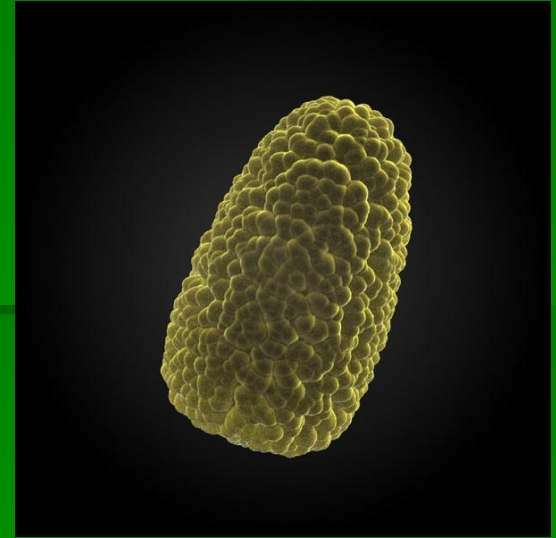


RABIES: Animals & Animal Exposures



Todd Tedrow, DVM
SD Animal Industry Board
October 30, 2017

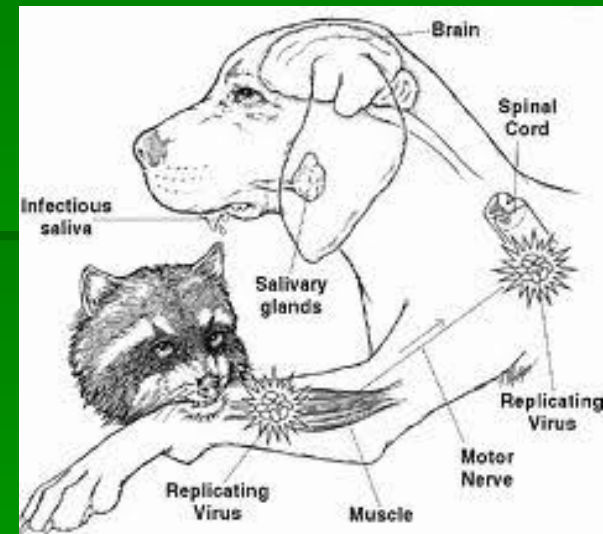
Causative Agent



- *Lyssavirus*
- All mammals are susceptible
- Zoonotic Disease
- Fatal

Transmission

- Direct contact
 - Infected animal
 - Saliva contains the virus
 - Bite wound is most common
 - Also through
 - Open sores
 - Mucous Membranes
- Indirect contact
 - Milk, contact with nervous tissue



Clinical Signs

- Affects the nervous system - Encephalitis
 - Changes in behavior
 - Aggressive or Dumb form
 - Difficulty swallowing
 - Change in vocalization
 - Paralysis
 - Recumbent
 - Death
 - **VARIABLE**

Rabies in South Dakota

- Endemic
- Wildlife Reservoir
 - Multiple variants
- US is free of canine rabies variant



Public Veterinary Medicine: Public Health

Compendium of Animal Rabies Prevention and Control, 2016

National Association of State Public Health Veterinarians Compendium of Animal Rabies Prevention and Control Committee

Catherine M. Brown DVM, MSc, MPH (Co-Chair)

Sally Slavinski DVM, MPH (Co-Chair)

Paul Ettestad DVM, MS

Tom J. Sidwa DVM, MPH

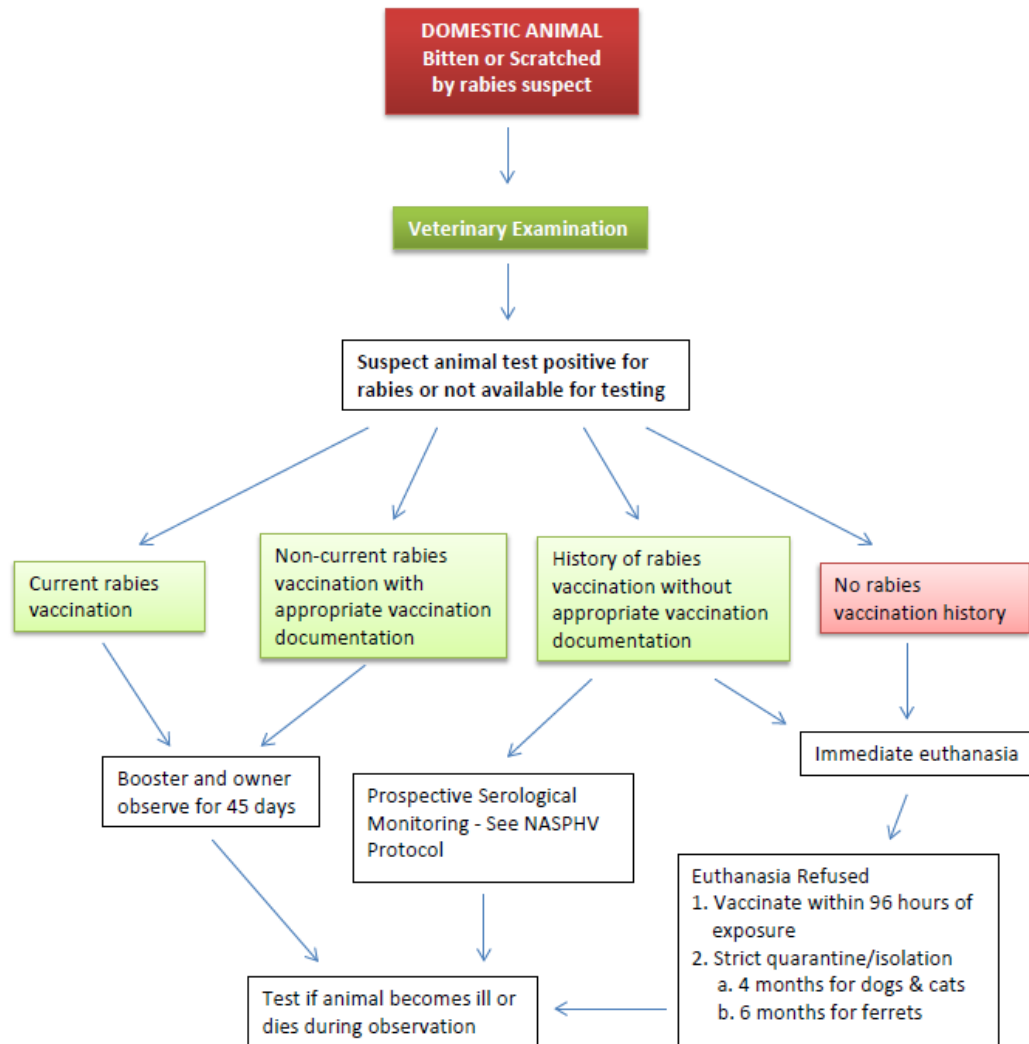
Faye E. Sorhage VMD, MPH

From the Massachusetts Department of Public Health, 305 South St, Jamaica Plain, MA 02130 (Brown); the New York City Department of Health and Mental Hygiene, 2 Gotham Center, CN# 22A, 42-09 28th St, Queens, NY 11101 (Slavinski); the New Mexico Department of Health, 1190 St Francis Dr, Room N-1350, Santa Fe, NM 87502 (Ettestad); and the Texas Department of State Health Services, PO Box 149347, MC 1956, Austin, TX 78714 (Sidwa).

Consultants to the Committee: Jesse Blanton, PhD (CDC, 1600 Clifton Rd, Mailstop G-33, Atlanta, GA 30333); Richard B. Chipman, MS, MBA (USDA APHIS Wildlife Services, 59 Chenell Dr, Ste 2, Concord, NH 03301); Rolan D. Davis, MS (Kansas State University, Room 1016 Research Park, Manhattan, KS 66506); Cathleen A. Hanlon, VMD, PhD (Retired); Jamie McAloon Lampman (McKamey Animal Center, 4500 N Access Rd, Chattanooga, TN 37415 [representing the National Animal Care and Control Association]); Joanne L. Maki, DVM, PhD (Merial a Sanofi Co, 115 Trans Tech Dr, Athens, GA 30601 [representing the Animal Health Institute]); Michael C. Moore, DVM, MPH

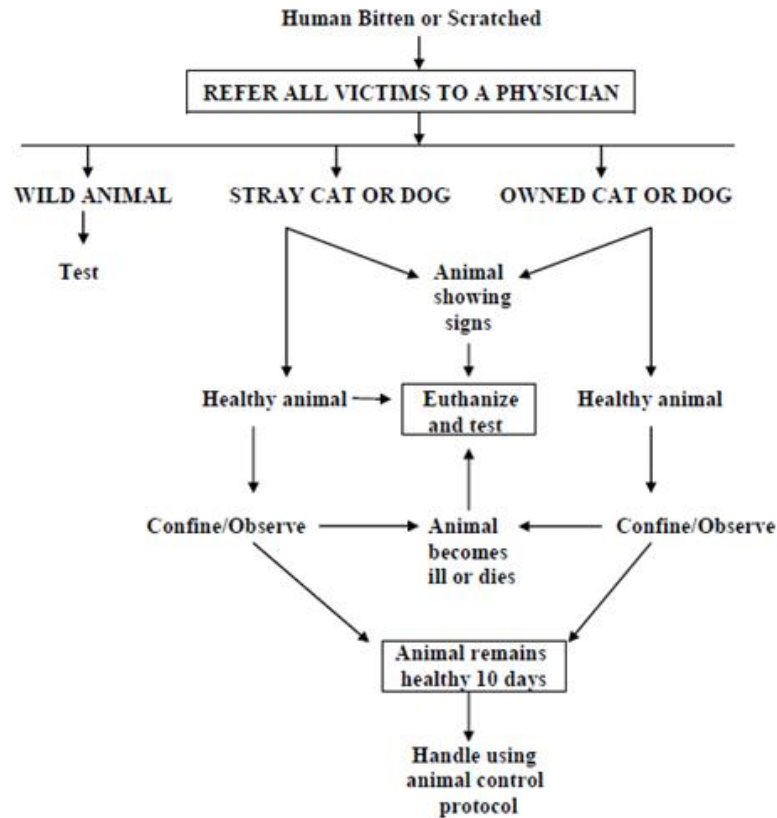
- <http://www.nasphv.org/Documents/RabiesCompendium.pdf>

Rabies Exposure Guidelines



Testing Laboratories:
SDSU Animal Disease Research and Diagnostic Laboratory, Brookings, SD
605.688.5171 (8am to 5pm)
<http://www.sdstate.edu/vs/adrdl/index.cfm>
South Dakota Department of Health, Pierre, SD
800.592.1861 (8am to 5pm); 800.592.1861 (after business hours)
<https://doh.sd.gov/lab/rabies.aspx>

RABIES GUIDELINES



For consultation on human exposure to rabies call:
South Dakota Public Health Department, Communicable
Disease Office, Joe Foss Building Pierre, SD 57501
Phone: 800-592-1861

Animal tests for rabies can be performed anytime at the
South Dakota Public Health Lab, 615 E 4th St., Pierre, SD.
Arrangements for testing can be made with the lab by calling
(605) 773-3368 during regular business hours.
For emergencies call 800-592-1861

Rabies Info Contacts

Addresses, telephone numbers and websites

Department of Health (rabies consultations)
615 East Fourth Street
Pierre, SD 57501-1700
Phone: 800-592-1861 or 605-773-3737;
after hours 800-592-1861 or 605-773-3737
<https://doh.sd.gov/diseases/infectious/diseases/facts/rabies.aspx>

Department of Health, Public Health Laboratory (rabies testing)
615 East Fourth Street
Pierre, SD 57501-1700
Phone: 800-592-1861 or 605-773-3368
<http://doh.sd.gov/Lab/rabies.aspx>

South Dakota Bat Group <http://sdbwg.org>

Animal Disease Research and Diagnostic Laboratory (rabies testing)
North Campus Drive
South Dakota State University
Brookings, SD 57007-1396
Phone: 605-688-5171
www.sdstate.edu/vs/adrdl

SD Animal Industry Board (livestock and animal veterinary and regulatory issues)
441 S. Fort Street, Pierre, SD 57501
Phone: 605-773-3321
<http://aib.sd.gov>

CDC Rabies: www.cdc.gov/rabies

Prevention

- **#1 VACCINATION**
 - Very effective
 - 1st at 3 months of age
 - Protected 28 days post vaccination
 - 2nd one year later
 - Follow label

- Avoid Exposure



Thank You Questions?



Todd Tedrow, DVM

Todd.tedrow@state.sd.us

605.773.3321

<http://aib.sd.gov/>

